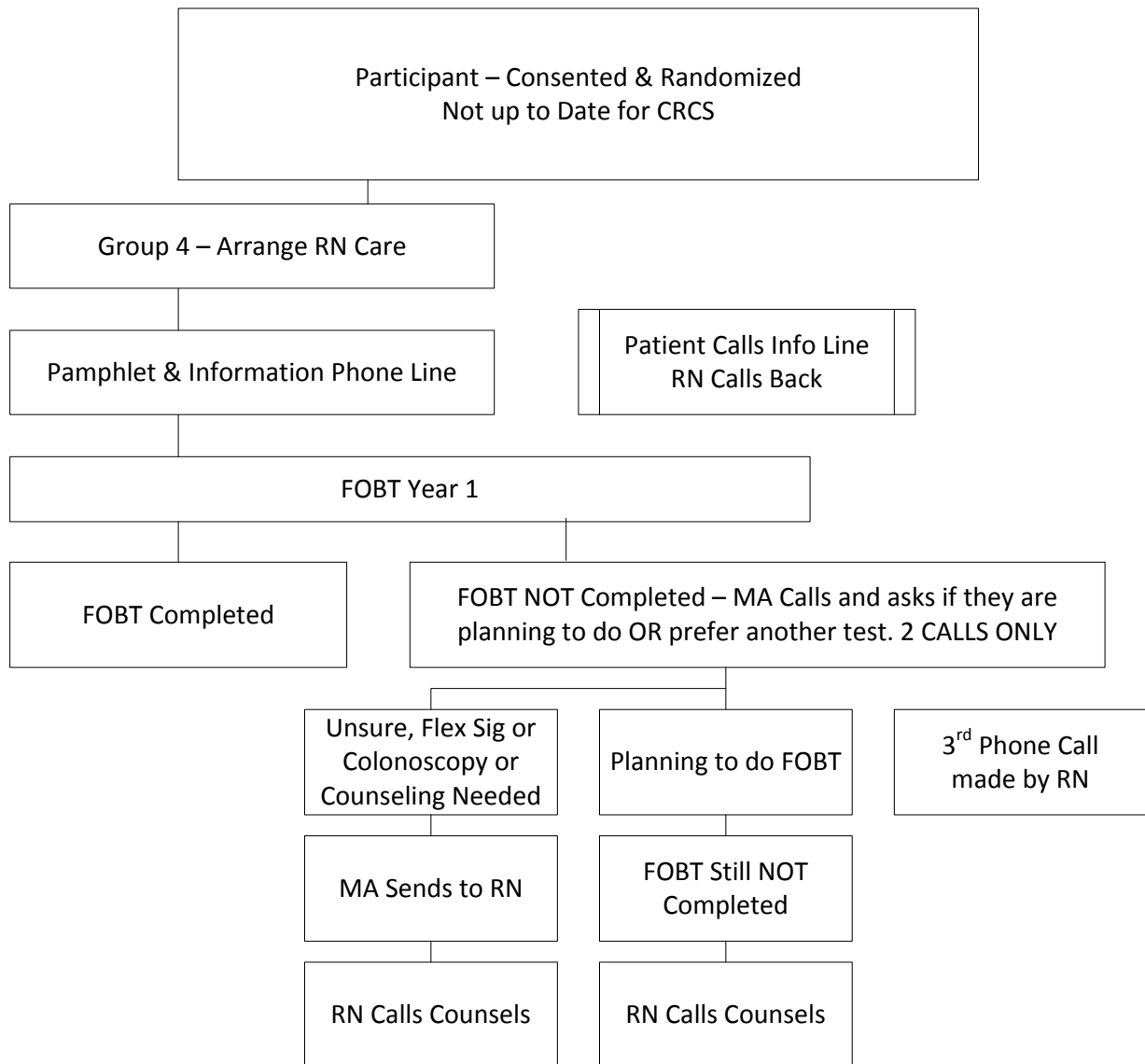


SOS Group 4 (Arranged RN Care) Flow Chart



Reiterate screening intention, check for patient understanding.

1. Sent in FOBT
2. Needs another stool kit
3. Another type of screening test already done
4. In process or will do later
5. Wants to do a colonoscopy instead - cc to Primary Care Physician (PCP)
6. Wants to do a flexible sigmoidoscopy instead (cc to PCP)
7. Wants more information from a provider (cc to PCP)
8. Clinical concern (PCP, RN, Consulting Nurse, accordingly)
9. Doesn't want to screen this year
10. Requesting information about disenrollment
11. Logistic issue – address or phone number change, leaving health plan
12. Unsure, unable to state screening intent (offer telephone appt. with PCP, or wait until next year, or remind can address later by calling study phone numbers)
13. Other