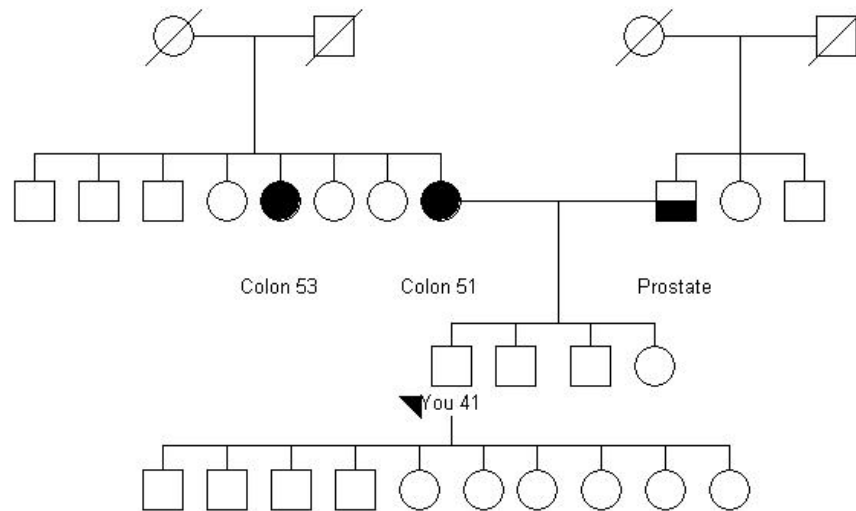


Jane Smith

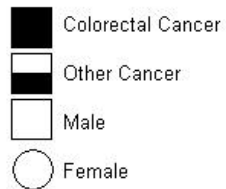
page

1

Your Family Tree



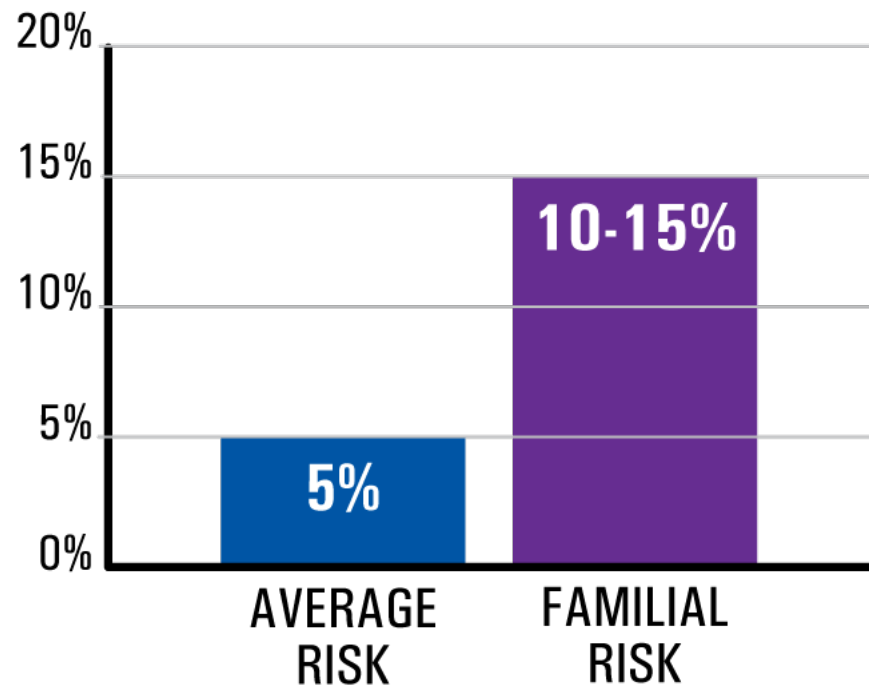
08/23/2010



What is your risk for colorectal cancer?

You indicated in the baseline questionnaire that your risk for colorectal cancer is **higher than** that of other people your age and gender.

- Approximately 5% of Americans will develop colorectal cancer during their lifetime.
- Having a close family member with colorectal cancer increases one's risk to 10-15%.
- The risk of colorectal cancer is doubled or tripled for people with a family history like yours.



How serious is colorectal cancer?

You indicated in the baseline questionnaire that you believe colorectal cancer is harmful.

- This table shows survival rates or the percentage of patients who live at least 5 years after their cancer is diagnosed, according to the stage at which their cancer was diagnosed.

Stages of Colorectal Cancer		Survival Rate
Stage 1	The cancer is contained to the lining of the colon.	92%
Stage 2	The cancer has grown through the colon, but has not spread to other parts of the body.	73%
Stage 3	The cancer has spread to the lymph nodes.	56%
Stage 4	The cancer has spread to other parts of the body, such as the liver.	8%

Jane Smith

What can you do to stop colorectal cancer?

Your most important barriers to getting a colonoscopy are:

The cost of colonoscopy is too high.

I am not sure if my insurance will pay for a colonoscopy.

Other Steps to Take in Getting a Colonoscopy

- 1** Contact a physician to obtain a referral
- 2** Contact a colonoscopy center to schedule an appointment
- 3** Confirm that the colonoscopy center will verify insurance coverage
- 4** Arrange a free day
- 5** Find someone to drive you

When will I take the first step?

Set a start date here: _____